

LOCATION: 1005 160th Ave. SE, Grandin, ND 58038

From Grandin, ND, 2 miles north on Hwy 81, 4 miles west on 160th Ave. SE to end of pavement.

Farm Retirement AUCTION

THURSDAY, JUNE 27 | 10AM 2019

AUCTIONEER'S NOTE: All equipment has been meticulously maintained and shedded. Major equipment begins selling at 10:30 AM. Live online bidding available on major equipment. Registration, terms, & details at SteffesGroup.com.



TRACTORS

2003 John Deere 9520, 4WD, active seat, buddy seat, powershift, 4 hyd., GreenStar ready, wheel & suitcase weights., 520/85R46 triples, 4,688 hrs., S/NRW9520P010817

2001 John Deere 9400, 4WD, 24 spd., 4 hyd., GreenStar ready, 710/70R42 triples, 4,763 hrs., S/NRW9400H041146

2004 John Deere 8120, MFWD, active seat, powershift, 4 hyd., return flow, 3 pt., quick hitch, 540/1000 PTO, GreenStar ready, hammerstrap, (8) front weights, front fenders, 380/85R34 front tires, 380/90R50 rear tires, duals, 4,926 hrs., S/NRW8120P021745

1997 John Deere 8300, MFWD, active seat, powershift, 4 hyd., return flow, 3 pt., quick hitch, 540/1000 PTO, GreenStar ready, hammerstrap, (8) front weights, front fenders, 380/85R34 front tires, 14.9-46 rear tires, duals, shows 1,262 hrs., S/NRW8300P014012

1990 John Deere 4455, MFWD, 3 hyd., 3 pt., quick hitch, 1000 PTO, 14.9-30 front tires, 14.6-46 tires & duals, 9,391 hrs., S/NRW4455P008284

1998 John Deere 7810, 2WD, PowrQuad, 3 hyd., power beyond, 3 pt., quick hitch, 540/1000 PTO, 11-16 front tires, 14.9-46 tires & duals, 5,855 hrs., S/NRWS6060019795

GPS EQUIPMENT

John Deere 2630 display, SF2 activation, S/NPCGU2UA348652

(2) John Deere 2630 displays, SF2, S/NPCGU2UA305008, S/NPCGU2UD461674

John Deere 2630 display, SF1, S/NPCGU2UD432926

(2) John Deere StarFire 3000 receivers, SF2, S/NPCGT3TA365892, S/NPCGT3TA119058

(2) John Deere StarFire 3000 receivers, SF1, S/NPCGT3TA332221, S/NPCGT3TB783812

John Deere StarFire ITC receiver, SF1, S/NPCGT01C410530

John Deere 1800 display, no activations, S/NPCGU2UA305008

John Deere brown box, mobile processor, display & key card, SF1, Y&M, no lines on screen

COMBINES

2012 John Deere S670, STS, Contour-Master, RWD, TouchSet, hopper ext., fine cut chopper w/PowerCast tailboard, long unloading auger, small wire and round bar concaves, 520/85R42 tires & duals, 600/65/28 rear tires, all tires New in 2017, 1,966 sep. hrs., 2,866 engine hrs., S/N1H0S670ST065162

2001 John Deere 9650, Walker, HHC, Outback auto steer, fine cut chopper, hopper ext., chaff spreader, 480/80R32

COMBINES

drive tires & duals, 16.9-26 rear tires, concave, engine OH in 2016, cylinder & bars replaced in 2017, 2,652 sep. hrs., 3,881 engine hrs., S/NH09650W690764

HEADS & HEADER TRAILERS

2010 John Deere 630F flex head, 30', AWS wind system, full finger auger, poly fingers, S/NH00630FTA0735707

2001 John Deere 925F flex head, 25', full finger auger, steel fingers, Crary air reel, S/NH00925F692123

2003 John Deere 914 pickup head, John Deere 7-belt pickup, wind guard, S/NH00914W700251

1996 John Deere 914 pickup head, John Deere 7-belt pickup, wind guard, single pt. hookups, S/NH00914W666521

Frontier HT1232 single axle header trailer, 30', front dolly wheels

Header trailer, 25', single axle, flex bar

SWATHERS & TRANSPORT

John Deere 590 pull-type swather, 21', auto fold, finger reel, S/NE0059A824062

Versatile 400 self-propelled swather, 18', cab, A/C, lift guards, Ford 6 cyl. gas engine, S/N13473

Swather transport, 2-wheel, 10'x11' deck, ramps, jack

GRAIN CART

Unverferth 8200 grain cart, 800 bu., large 1000 PTO, roll tarp, 30.5-32 tires, S/NB2049129

AIR SEEDER

2012 John Deere 1890 air seeder, 40', 7 1/2" & 15" spacing, 1910 tow-behind commodity cart, 2-compartment, fill auger, 16.5-16.1 front tires, 800/70R38 rear tires, approx. 15,000 acres, S/NUD432926

PLANTER

John Deere 7300 planter, 12x22", 1.6 bu. hoppers, lift assist, insecticide box, markers, dirt plows, wind deflectors, (3) sets of beet plates, S/NA07300A102202

TILLAGE EQUIPMENT

Salford 570 vertical tillage, 40', walking tandems, crumblers, weight pkg., 3-bar harrow, S/N6228

Summers Super Roller land roller, 45', 42" drums, rear fold, S/NM0664

Sunflower 4530X19 disc chisel, 25', 20" blades, 19 shank, walking tandems, rock cushion std., S/N24572100000000

John Deere 2210 field cultivator, 55', floating hitch, single pt. depth control,

TILLAGE EQUIPMENT

knock-on shovels, John Deere 4-bar harrow, S/N1N02410XC0745572

John Deere 2410 chisel plow, 42', single pt. depth control, floating hitch, 4" double pt. shovels, Summers 106 3-bar harrow, S/N1N02210XJB0745121

Case-IH 5600 chisel plow, 34', 4" double pointed shovels, Flexi-Coil 3-bar harrow

Graham Hoeme chisel plow, 15', hyd. lift

Melroe harrow, 60', 5-bar

John Deere plow, 5x16", semi-mount

Kongskiide Triple K seed bed finisher, 28', crumblers, walking tandems on main frame

ROW CROP EQUIPMENT

(2) Alloway 2130 row crop cultivators, 12x22", cutaway discs, tunnel shields

TRUCKS

2005 IHC 7600 tri-axle, tri-drive, Cummins ISO engine, automatic, air ride, A/C, cruise, 22' Knights box, 3 pc. combo end gate, Power Tower hoist controls, roll tarp, 315/80R22.5 front tires, 11R22.5 drive tires, shows 499,804 miles

1998 Freightliner FLD120 tri-axle, tri-drive, M11 Cummins, automatic, air ride, 22' box, 3 pc. combo end gate, roll tarp, 315/80R22.5 front tires, 11R22.5 drive tires, New drive lines in 2018, New transmission, rods, main bearings & injectors in 2017

1995 IHC 8200 tri-axle, lift tag, M11 Cummins, 10 spd., engine brake, cruise, air ride, 22' Loadline box, 3 pc. combo end gate, roll tarp, Power Tower hoist controls, 295/75R22.5 tires, shows 446,628 miles

1995 Volvo tri-axle, lift tag, L10 Cummins, automatic, air ride, 22' Candace box, 3 pc. combo end gate, roll tarp, 11R22.5 tires

1986 Kenworth T600 tri-axle lift tag, Cummins, 350 hp., 13 spd., air ride, 22' box, roll tarp, combo end gate, 11R24.5 front tires, 295/75R24.5 rear tires, near new tires, 869,236 miles

1986 Volvo/White tri-axle, tri-drive, Detroit 6V92, 10 spd., 22' Frontier box, combo end gate w/center swing out, roll tarp, 14,000 lb. front axle, 385/65R22.5 front tires, 11R22.5 rear tires, 653,886 miles, OH in 2009

1978 GMC 6500 tandem, twin screw, 427, 5&2 spd., 19' Frontier box, Harsh twin post hoist, roll tarp, 9:00-20 front tires, 10:00-20 rear tires

1974 Chevrolet C65 tandem, twin screw, 427, automatic, 20' box, hinged center section end gate, roll tarp, ladder

SUGARBEET EQUIPMENT

Artsway 690 beet harvester, 6x22", Dee row finder, ext. grab rolls, New lifter wheels in 2018

Pallet of Artsway New & used parts for 690 lifter

Artsway 786A defoliator, 6x22", knife scalpers, steel/rubber/rubber

Artsway 786A defoliator, 6x22", knife scalpers, steel/rubber/rubber, S/NA80E786A901194

Pallet of new & used defoliator parts

SPRAYERS & SADDLE TANKS

Summers Ultimate NT pull-type sprayer, 90', 1,500 gal. tank, triple nozzle bodies, chemical mix cone, 5-section control, Raven 450 monitor, rinse tank, 14.9-46 tires, S/NF0659

Hardi Navigator pull-type sprayer, 66', high pressure pump, PTO, 14.9-38 tires & duals

Century saddle tanks, (2) 125 gal. tanks w/mounts for John Deere 40 Series

GRAIN HANDLING EQUIPMENT

Walinga 6614 grain vac, 6", (2) poly flex hoses, (1) steel flex tube, cleanup kit, S/NMT661404029648

Westfield MKX130-84 auger, 84'x13", low pro swing auger, electric hopper walker, S/N248483

Westfield WR70-26 auger, 26'x7", 240v motor

Westgo auger, 22'x6", used to treat seed

HOPPER BINS

(2) Sioux hopper bins, 3,500 bu., ribbed, double ring skids

SCRAPERS, BLADE, & DITCHER

Ashland I-900 scraper, 9 yd., hyd. push-off, 16.5-16.1 front tires, 16.9-24 rear tires, S/N21598

Eversman 600 scraper, 6 yd., hyd. dump, 9.5L-15 tires, S/N2822

BIL Mfg. pull-type blade, 16', 2-way hyd. angle, tilt, folding end caps, weight box, S/N570

Sand rotary ditcher, 3 pt., 540 PTO, 36" wheel, S/N1953

LASER EQUIPMENT

AGL GradoPlane 25X laser, receiver & tripod

Stabilizer laser trailer, shedded, used very little

Laser mast, hyd.

OTHER EQUIPMENT

Donahue tandem axle trailer, 28', double pipe

OTHER EQUIPMENT

John Deere HX20 batwing mower, 20', chain guard, stump jumpers, aircraft tires

John Deere 696 snowblower, 96", 3 pt., 1000 PTO, hyd. rotating spout, bad gear box

John Deere snowblower, 96", double auger, hyd. rotating spout, 3 pt., bad gear box

FUEL & POLY TANKS

(3) 1,200 gal. poly tanks

Fuel tank, 1,000 gal., 120v pump w/meter

Fuel tank, 500 gal., 120v pump, no meter

Fuel tank, 90 gal., aluminum, L-shaped w/cross body toolbox, 12v pump

Fuel service tank, 100 gal., 2 compartment, vacuum pumps

TIRES

480/80R42 tires

14.9-46 tractor tires, on John Deere 10-bolt rims

14.9-46 tires, band duals

14.9-38 tires on double bevel rims

(4) 7.50-16 single rib tires on rims

(2) 6:00-16 single rib tires

13-24 single rib tires for John Deere 4455, New

13.1-30 single rib tires on John Deere rims

RECREATION

(2) 1985 Honda Big Red 3-wheel ATVs w/reverse

Honda 185S 3-wheel ATV

Honda 200 2-wheel ATV

SHOP EQUIPMENT

Generator, 4,400 watt, portable, Briggs & Stratton 8 hp. gas motor

Air compressor, portable, 120v w/hose

Craftsman radial arm saw, 10", 120v

PARTS, FARM SUPPORT ITEMS & MISC.

(4) Pallets of (7) John Deere suitcase weights on each pallet

(6) John Deere 900 & 600 Series header snouts, poly, on pallet

Pallet of New and used parts for John Deere 2210 cultivator

Pallet of New and used parts for John Deere 2410 chisel plow

Pallet of New and used parts for Sunflower disc chisel

Cultivator for lawn tractor, 6'

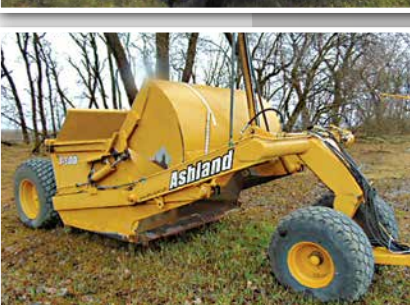
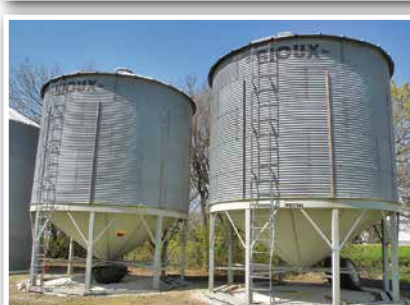
Radio tower, 60'

H&S tractor cone guidance

Lasco lightning weeder, 22', PTO

(2) Grain moisture testers

Pallet of steel fence posts



SteffesGroup.com

SHORT & SWEET FARMS INC. / Frank, 701.436.6194

or from Steffes Group; Gregg Holte, 218.790.1705; Dave Krostow, 218.779.6865



Steffes Group, Inc., 2000 Main Avenue East, West Fargo, ND 58078 | 701.237.9173

Scott Steffes ND81, Brad Olstad ND319, Bob Steffes ND82, Max Steffes ND999, Justin Ruth ND2019, Ashley Huhn ND843, Eric Gabrielson ND890, Randy Kath ND894, Scott Gillespie ND1070, Shelly Weinzell ND963

TERMS: All items sold as is where is. Payment of cash or check must be made sale day before removal of items. Statements made auction day take precedence over all advertising. \$35 documentation fee applies to all titled vehicles. Titles will be mailed. Canadian buyers need a bank letter of credit to facilitate border transfer.